

2012 **Journey**





On the cover: **40U** Desert Sand Full-Body Paint



**SMARTSPACE**



**36M** Provence with Honey Cherry

## Be Good to Yourself

You know what you want in a motor home. So why compromise? Treat yourself to luxurious amenities and a world-renowned diesel chassis, all at a friendly price in the Winnebago Journey®. Four full-featured models give you floorplan flexibility and the list of standard features and available luxury enhancements goes on and on. The new 36M offers a level of spaciousness you would not think possible in a 36' coach thanks to a full-wall slideout, a large galley and an available extendable sectional dinette that expands to seat guests. Other favorite features include standard

MCD American Duo® solar/blackout roller shades, the much-lauded Rest Easy® extendable sectional sofa and the Flexsteel® Euro recliner with built-in footrest.

With the Maxum® chassis (36M, 40U and 42E) as its foundation you are getting a premier diesel pusher driving experience combined with storage capacity of up to 218 cubic feet. In the 34Y, the Freightliner® XCS chassis delivers the proven ride and performance you expect from Freightliner. Be good to yourself in a coach that begs to be called home: the 2012 Winnebago Journey.

### Why Journey?

- Unmatched performance of Maxum Chassis (36M, 40U, 42E) or Freightliner XCS Chassis (34Y)
- Full-wall slideouts and quad-slideout floorplans
- Corian® countertops
- MCD American Duo solar/blackout roller shades
- BIG shower (40U, 42E)
- Rest Easy extendable sectional sofa (40U, 42E)
- Available full-width slideout storage tray (36M, 40U, 42E)
- Available BenchMark® dinette w/extendable table and chairs (34Y)
- Available extendable sectional dinette (36M)
- TrueAir® Maximum Comfort A/C
- Private master bath and guest bath (42E)



**Recognized Quality** The RV Dealers Association bestows its annual Quality Circle Award based on dealer ratings to the manufacturers that provide exceptional products, service and support. Only one manufacturer has received this honor for sixteen consecutive years: Winnebago Industries®.

**40U** Travertine with Forest Cherry



40U Travertine with Forest Cherry

## Redefining Relaxation

When nothing sounds better than a relaxing evening at home, look no further than your Winnebago Journey. Leading the way is the new Euro recliner with built-in footrest (34Y, 40U, 42E) that offers a pull-out table for your paper or coffee (40U, 42E). Look around and find yourself surrounded by the finer things, such as a soft vinyl ceiling, accent rope lighting and luxurious Ultraleather.™

The Rest Easy extendable sectional sofa (40U, 42E), also in Ultraleather, is ideal for spending time with family and friends. From here you can all enjoy the stunning clarity of the available Blu-Ray home theater system. The standard home theater sound system comes with a DVD player and HD video selection system, so you can catch your favorite movies on any of the coach TVs.

**WINNEBAGO**  
GoWinnebago.com

GoWinnebago.com is your resource for web-exclusive content and all the details you can't fit in a brochure!



## Show Off Your Culinary Skills

The countertops are the showpiece of any great kitchen and here you'll find Corian countertops with matching sink and range covers and an elegant backsplash. The pull-out island on the 36M, 40U, and 42E offers even more workspace with a solid-surface countertop and three drawers for all of your kitchen tools. This upscale look can be further enhanced by upgrading the standard four-door refrigerator/freezer to the French door refrigerator/freezer with ice and water dispenser.

Not to be outdone, the abundant cabinetry comes in three premier wood choices: Honey Cherry, Forest Cherry and our new Coffee-Glazed Vienna Maple. Amidst all the visual appeal, you will find the appliances you need for your favorite meals, including a microwave/convection oven (microwave oven 34Y), three-burner range top and an exterior vented range fan. A water filtration system delivers crisp, cold water on demand.



### Open Wide

The French door refrigerator, available on the 36M, 40U and 42E, features a pull-out freezer drawer and ice/water dispenser and comes with a 2,800 watt inverter and two additional house batteries.



## Any Way You Want It

Whether you like your bed queen- or king-sized, firm or soft, the Journey has you covered. Dial in your precise level of comfort with the Ideal Rest® Digital Comfort Control mattress, standard on the 42E and available on all other models. The 42E also comes standard with a powered bed so you can easily elevate your head for reading a book or watching movies in bed.

For your enjoyment, a 26" HDTV (32" 40U) and an available stereo (NA 42E) with CD/DVD player, AM/FM stereo, alarm clock, iPod/MP3 input and headphone jack let you watch movies and more in the privacy of your bedroom. A large wardrobe and chest of drawers provide the final decorative and functional touches.

MCD American Duo solar/blackout roller shades coupled with TrueAir Maximum Comfort A/C and the available ceiling fan provide optimal climate control so you will get the best night's rest possible.



**Bring More** Pack for the long haul in the beautiful and plentiful built-in storage drawers and closets.



**No Hassle** Love to take longer trips? Add the stackable washer and dryer for fresh clean clothes on the road without a laundromat stop (washer/dryer combo 34Y).



## Drive Right

The right equipment can enhance even the most scenic of road trips. For starters, every Journey comes with the RV Radio®/rearview and sideview monitor featuring a CD player and touch screen controls. Choose the Infotainment Center/GPS to keep you on course and entertained along the way. But why stop there? You can also add Sirius® satellite radio with more than 120 digital channels across the U.S. and Canada.

Plush Ultraleather cab seats help you feel relaxed as the miles roll by. The TWR tilt/telescoping steering column lets you adjust the steering wheel to your perfect height and angle. The powered MCD American Duo solar/blackout roller shades on the windshield act as a sunvisor while you drive and control your light and privacy when parked. The remaining cab and coach windows feature manual MCD American Duo solar/blackout roller shades.



**On Point** A 7" LCD monitor, viewable by both driver and passenger, is part of our available Infotainment Center, which includes GPS, voice guidance, two remotes, and Bluetooth™ compatibility.

# Best in Class

See how Winnebago Industries takes motor home design and function to the next level, and why we've earned the right to be called the Most Recognized Name in Motor Homes.®



**Let There Be Light** With our smoothly retracting *MCD American Duo Solar/Blackout Roller Shades* you can control just how much light and privacy you want—no matter the time of day.



**Guess Who's Coming?** No worries with the available *Extendable Sectional Dinette* (36M). Retracted it provides seating for two, it easily expands to seat four and quickly converts into a comfortable bed.



**Family Time** Gather around the television for movies or sit back and enjoy conversation on the *Rest Easy Extendable Sectional Sofa*. Covered in soft *Ultraleather*, it is amazingly comfortable and easily expands to create more seating (40U, 42E).



**Power Down** The *Powered MCD American Duo Solar/Blackout Shades* on the windshield act as a sunvisor while you drive, and control your light and privacy when parked.



**Time to Grill**  
An easy access *LP Gas Accessory Valve* is perfectly located on the patio side for your convenience.



**Lean Back** Press a button and the *Rest Easy Multi-Position Lounge* slides into perfect reclining position with a pull-out ottoman. Keep going and you have yourself a comfortable bed (34Y, 36M).



**Accessibility and Capacity** The Maxum chassis offers both, thanks to the large *Slideout Storage Tray* that is sized to provide maximum width for storing grills, golf clubs and more (available on 36M, 40U, 42E).



**Outdoor Fun**  
Liven up the campsite by choosing the *Exterior Entertainment Center* with 32" LCD HDTV (LED HDTV 42E).



## Choose Your Chassis

Winnebago Industries has teamed with Freightliner to offer two exceptional chassis perfectly suited to the Winnebago Journey, ensuring superior handling and an incredibly smooth ride.

# MAXUM CHASSIS



THE LEADER AT EVERY TURN™

The Maxum chassis harnesses Winnebago Industries' SuperStructure® philosophy in tandem with the Freightliner XCL chassis. The Journey 36M, 40U and 42E tag-axle ride on the Maxum chassis; its lowered rail design provides a lower center of gravity for improved ride and handling with up to 218 cubic feet of exterior storage. On the road, you'll get:

- 32,350-lb. GVWR (36M)
- 34,320-lb. GVWR (40U)
- 44,320-lb. GVWR (42E)
- 360-hp Cummins® ISB 6.7L turbo-charged diesel engine (36M)
- 380-hp Cummins ISC 8.3L turbo-charged diesel engine (40U)
- 400-hp Cummins ISL 8.9L turbo-charged diesel engine (42E)
- Allison® 3,000 MH 6-speed automatic transmission

The Journey 34Y is built exclusively on the Freightliner XCS chassis, which was created specifically for diesel pusher motor home applications. Here's what you'll experience:

- 27,910-lb. GVWR
- 340-hp Cummins ISB 6.7L turbo-charged diesel engine
- Allison 2,500 MH 6-speed automatic transmission

### Both exceptional offerings include:

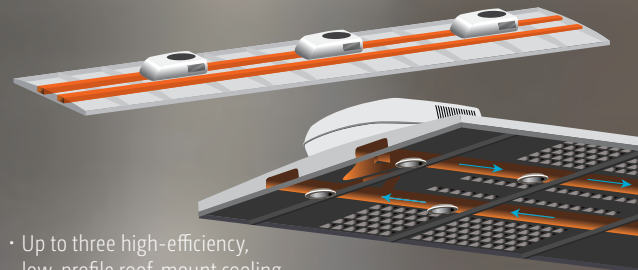
- TRW tilt/telescopic steering column
- NeWay® front and rear air suspension
- 15,000-lb. hitch (42E)
- Up to 55 degree wheel cut
- 10,000-lb. hitch (34Y, 36M, 40U)
- Engine exhaust brake

No matter which model you choose, you will benefit from Freightliner's Service Network, which is second to none with over 400 locations in the U.S. and Canada, many open 24/7.

## Set Your Coordinates to Maximum Comfort



TrueAir maximum comfort A/C raises the bar on RV air-conditioning, employing next-generation technology to provide unparalleled climate control and comfort:



- Up to three high-efficiency, low-profile roof-mount cooling units deliver unsurpassed cooling power (two on 34Y and 36M)
- Dual-zone thermostat offers precision cooling
- D-shaped formed ductwork optimizes airflow
- Infinitely adjustable ceiling vents provide finite control

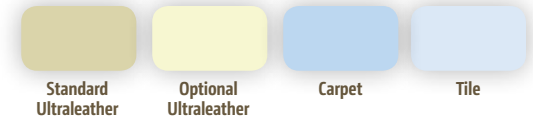
**WINNEBAGO**  
GoWinnebago.com

GoWinnebago.com is your resource for web-exclusive content and all the details you can't fit in a brochure!



# Floorplans

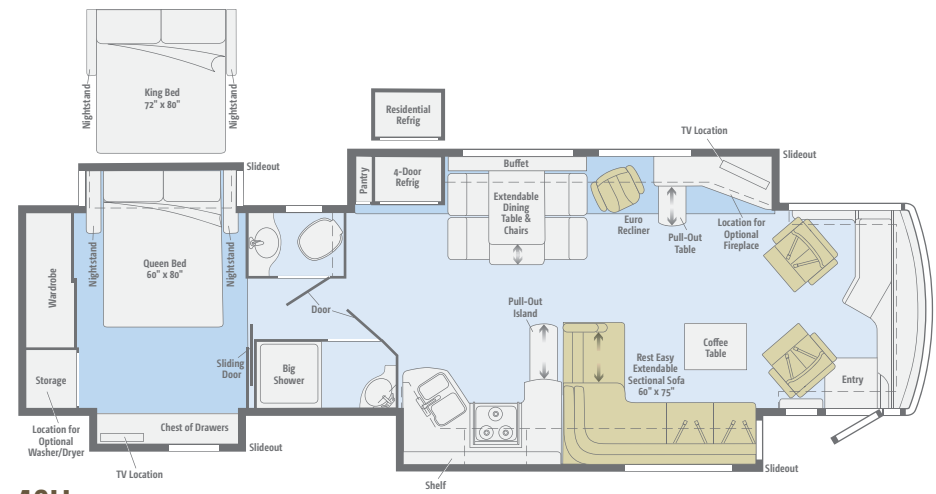
Dimensions shown are for sleeping space only and may vary due to styling differences. Dashed lines denote overhead storage areas. Floorplans and specifications are also available online at [GoWinnebago.com](http://GoWinnebago.com).



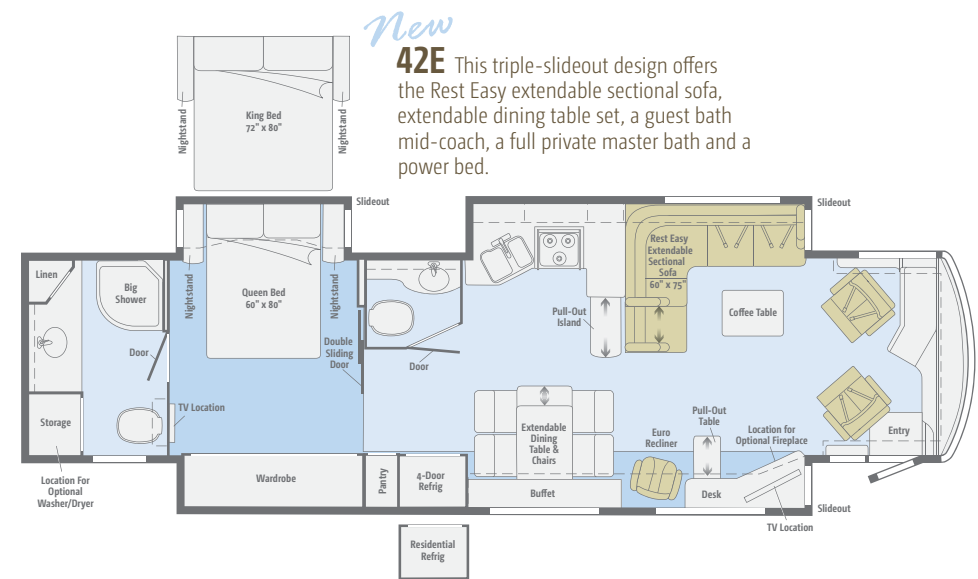
**34Y** A full-wall slide maximizes your living space while providing furniture options such as the BenchMark dinette, extendable dining table/buffet and the Rest Easy sofa.



**36M** With a slideout extending the full length of the coach, there is plenty of room for a large galley with pull-out island, dual sofas and a large bedroom.



**40U** This quad-slideout floorplan boasts the Rest Easy extendable sectional sofa and the new Flexsteel Euro recliner with built-in footrest to create the ultimate lounge.



**42E** This triple-slideout design offers the Rest Easy extendable sectional sofa, extendable dining table set, a guest bath, a full private master bath and a power bed.



See your favorite motor homes come alive with virtual tours at [GoWinnebago.com](http://GoWinnebago.com).



# Specifications

## CHASSIS

**Freightliner® XCS Chassis 340-hp Cummins® ISB 6.7L turbo-charged engine** (34Y)  
**Maxum® Freightliner Chassis 360-hp Cummins ISB 6.7L turbo-charged diesel engine** (36M)  
**Maxum Freightliner Chassis 380-hp Cummins ISC 8.3L turbo-charged diesel engine** (40U)  
**Maxum Freightliner Chassis 400-hp Cummins ISL 8.9L turbo-charged diesel engine** (42E)  
**Allison® 6-speed automatic 2500 MH transmission** (34Y)  
**Allison 6-speed automatic 3000 MH transmission** (36M, 40U, 42E)  
**Information display center**  
**Rear radiator**  
**NeWay® front and rear air suspension**  
**160-amp. alternator**  
**Air brakes w/ABS**  
**Engine exhaust brake**  
**Quick-connect air connection w/manual shut off**  
**Automatic hydraulic leveling jacks**  
**7-pin trailer wiring**  
**Trailer Hitch<sup>6</sup> 10,000-lb. drawbar/500-lb. maximum vertical tongue weight** (34Y, 36M, 40U)  
**Trailer Hitch<sup>6</sup> 15,000-lb. drawbar/1,500-lb. maximum vertical tongue weight** (42E)  
**Stainless steel wheel liners** (34Y)  
**Stylized aluminum wheels** (36M, 40U, 42E)

## CAB CONVENIENCES

**Cab Seats** armrests, lumbar support and multi-adjustable slide/recline/swivel  
**Power driver seat**  
**Power passenger seat** (36M, 40U, 42E)  
**Passenger seat w/footrest** (36M, 40U, 42E)  
**RV Radio®/Rearview Monitor System** 6.5" LCD touch screen, CD player, weather band, remotes, iPod/MP3 input, rearview color camera and sideview camera system  
**Cruise control**  
**12-volt powerpoints**  
**Powered stepwell cover**  
**Powered MCD American Duo® solar/blackout roller shades** (front windshield)  
**Defroster fans**  
**MCD American Duo solar/blackout roller shades** (driver and passenger windows)  
**Chassis/house battery radio power switch**  
**Power mirrors w/defrost and turn signal indicator**  
**TRW tilt/telescopic steering column w/foot actuated pedal**  
**Map lights**  
**Power door lock w/remotes**  
**C.B. wire prep**

## OPTIONAL EQUIPMENT

**Infotainment Center/GPS** 7" touch screen monitor w/split screen function, turn-by-turn voice guidance, rear and sideview cameras, Bluetooth, AM/FM/CD/DVD player, remotes, iPod interface connector, USB connection, Sirius® satellite ready  
**Sirius Satellite Radio** 6-month complimentary subscription and iPod interface connector  
**Power passenger seat** (34Y)  
**Passenger seat w/footrest** (34Y)

## INTERIOR

**32" LCD HDTV** (front overhead, NA w/retractable 40" TV/buffet/dining table and chairs option) (34Y)  
**40" LCD HDTV** (mid-coach) (36M, 40U, 42E)  
**Home Theater Sound System** FM/CD/DVD player, auxiliary and iPod inputs, amplifier, receiver, 5 speakers and subwoofer  
**Satellite system ready**  
**Digital HDTV amplified antenna system**  
**HD video selection system**  
**Key-activated slideroom master lock switch**  
**Mini blind** (40U bath)  
**MCD American Duo solar/blackout roller shades** (lounge, dinette and bedroom)  
**Soft vinyl ceiling**  
**Vinyl tile flooring** (34Y)  
**Ceramic tile flooring** (36M, 40U)  
**Polished porcelain tile flooring** (42E)  
**Accent rope lighting**  
**OnePlace® systems center**  
**Tinted dual-glazed/thermo-insulated/flush-mounted coach windows**  
**Powered ventilator fan** (bath 36M, 40U, 42E)  
**Powered ventilator fan** (galley)

## OPTIONAL EQUIPMENT

**Combination washer/dryer** (34Y)  
**Stackable washer and dryer** (36M, 40U, 42E)  
**Electric fireplace** (40U, 42E)  
**King-Dome® HD-ready in-motion satellite dish w/dual LNB**  
**King-Dome automatic satellite dish w/dual LNB**  
**32" LCD HDTV** (front overhead) (36M)  
**Retractable 40" LCD HDTV, buffet, dining table and chairs** (NA w/32" front overhead TV) (34Y)  
**Blu-Ray home theater system**  
**Polished porcelain tile flooring** (36M, 40U) (mandatory after 9/1/2011)  
**Powered ventilator fan** (bath 34Y)

## GALLEY

**Corian® countertops and backsplash**  
**4-door refrigerator/freezer w/icemaker**  
**Microwave oven w/vented range fan** (34Y)  
**Microwave/convection oven w/vented range fan** (36M, 40U, 42E)

**3-burner Amana® range top w/storage below**  
**Corian range and sink covers**  
**Filtration system w/separate cold water faucet**

## OPTIONAL EQUIPMENT

**Microwave/convection oven w/vented range fan** (34Y)  
**3-burner Amana range w/oven**  
**Residential stainless steel Maytag® French door refrigerator w/water/ice dispenser and bottom freezer drawer** (w/2,800-watt inverter and 2 additional 12-volt coach batteries) (36M, 40U, 42E)

## BATH

**Corian countertop and backsplash**  
**Handheld showerhead**  
**Textured glass shower door**  
**Skylight**  
**Porcelain toilet**  
**Area rug** (42E)

## BEDROOM

**26" LED HDTV** (36M, 42E)  
**26" LCD HDTV** (34Y)  
**32" LCD HDTV** (40U)  
**Queen bed w/innerspring mattress** (34Y, 36M, 40U)  
**Powered queen bed w/Ideal Rest® Digital Comfort Control mattress w/remotes** (42E)  
**Bedsread, pillows, and pillow shams**

## OPTIONAL EQUIPMENT

**King Ideal Rest Digital Comfort Control mattress w/remotes** (34Y, 40U)  
**Queen Ideal Rest Digital Comfort Control mattress w/remotes** (34Y, 36M, 40U)  
**Powered king bed w/Ideal Rest Digital Comfort Control mattress w/remotes** (42E)  
**King bed w/innerspring mattress** (34Y, 40U)  
**Stereo System** AM/FM stereo, CD/DVD player, alarm clock, iPod/MP3 input, headphone jack, speakers (NA 42E)  
**Ceiling fan**

## EXTERIOR

**Powered patio awning w/wind sensor**  
**KeyOne® lock system**  
**Porch lights**  
**Powered entrance awning**  
**Lighted storage compartments**  
**Driver's-side docking/service light**  
**Lighted stepwell**  
**Storage containers w/lids** (4) (36M, 40U, 42E)  
**Removable flooring panels in main storage bay** (36M, 40U, 42E)  
**Automatic entrance steps**  
**Auxiliary side lamps**

## Ladder

**Rear mud flaps** (36M, 40U, 42E)  
**Full-width mudguard** (36M, 40U, 42E)  
**Lower front protective mask**

## OPTIONAL EQUIPMENT

**Entertainment Center** 32" LCD HDTV, AM/FM stereo, speakers, DVD player w/remote (34Y, 36M, 40U)  
**Entertainment Center** 32" LED HDTV (42E)  
**7" folding step ladder** (36M, 40U, 42E)  
**Slideout storage compartment tray** (36M, 40U, 42E)

## HEATING & COOLING SYSTEM

**TrueAir® Maximum Comfort A/C, 13,500 BTU** (2 cooling units 34Y, 36M; 3 cooling units 40U, 42E)  
**A/C heat pumps** (2 heat pumps 34Y, 36M, 42E; 3 heat pumps 40U)  
**40,000 BTU furnace w/2-stage blower** (34Y, 36M)  
**35,000 BTU primary furnace** (40U, 42E)  
**25,000 BTU secondary furnace** (42E)  
**20,000 BTU secondary furnace** (40U)

## ELECTRICAL SYSTEM

**Service Center** lighted, cable input, 50-amp. power cord, QuickPort® shoreline/generator automatic changeover switch, portable satellite hookup  
**1,000-watt inverter w/remote panel** (34Y)  
**2,000-watt inverter/charger w/remote panel** (2,800-watt w/optional French door refrigerator) (36M, 40U, 42E)  
**6,000-watt Cummins Onan® Quiet Diesel™ generator** (34Y)  
**8,000-watt Cummins Onan Quiet Diesel generator** (36M, 40U, 42E)  
**Cummins Onan Energy Command™ automatic generator start system** (36M, 40U, 42E)  
**Auxiliary start circuit**  
**AC/DC electrical distribution system**  
**80-amp. converter/charger** (34Y)  
**2 Deep-cycle Group 31 marine/RV batteries** (34Y)  
**4 Deep-cycle Group 31 marine/RV AGM batteries** (6 batteries w/optional French door refrigerator) (36M, 40U, 42E)  
**Battery disconnect system** (coach and chassis)  
**PowerLine® energy management system**  
**Automatic dual-battery charge control**  
**Solar panel battery charger** (NA 42E)  
**Chassis battery charger/maintainer**  
**Exterior TV jack and AC duplex**

## OPTIONAL EQUIPMENT

**8,000-watt Cummins Onan Quiet Diesel generator** (34Y)  
**Cummins Onan Energy Command automatic generator start system** (34Y)

## PLUMBING SYSTEM

**Service Center** pressurized city water hookup w/diverter fill, fresh water drain, drainage valves, exterior wash station w/pump switch, holding-tank flushing system, 10' sewer hose (34Y), 20' sewer hose (36M, 40U, 42E), QuickPort, QuickConnect® (36M, 40U, 42E), lights  
**On-demand water pump**  
**10-gallon water heater 110V/LP gas w/motorair**  
**TrueLevel™ holding-tank monitoring system**  
**Winterization Package** water heater bypass valve and siphon tube  
**Full-coach water filtration system**  
**LP tank w/gauge**  
**LPG accessory connection** (patio area)  
**Heated holding-tank compartment**

## SAFETY

**Seat belts**  
**LP, smoke and carbon monoxide detectors**  
**10 BC fire extinguisher**  
**Ground fault interrupter**  
**Fog lamps**  
**High-mount brake lamps**

## WARRANTY<sup>7</sup>

**12-month/15,000-mile basic warranty<sup>8</sup>**  
**36-month/36,000-mile limited warranty on structure<sup>8</sup>**  
**10-year limited parts-and-labor warranty on roof skin<sup>8</sup>**

- <sup>1</sup> The height of each model is measured to the top of the tallest standard feature and is based on the curb weight of a typically equipped unit. The actual height of your vehicle may vary by several inches depending on chassis or equipment variations. Please contact your dealer for further information.
- <sup>2</sup> Journey floorplans feature a wide-body design – over 96" in making your purchase decision, you should be aware that some states restrict access on some or all state roads to 96" in body width. Before making your purchase decision, you should confirm the road usage laws in the states of interest to you.
- <sup>3</sup> The load capacity of your motor home is designated by weight, not by volume, so you cannot necessarily use all available space when loading your motor home.
- <sup>4</sup> Capacities are based on measurements prior to tank installation. Slight capacity variations can result due to installation applications.
- <sup>5</sup> Capacities shown are tank manufacturer's listed water capacity (W.C.). Actual filled LP capacity is 80% of listing due to overfilling prevention device on tank.
- <sup>6</sup> Actual towing capacity is dependent on your particular loading and towing circumstances which includes the GVWR, GAWR, and GCWR, as well as adequate trailer brakes. Please refer to the Operator's Manual of your vehicle for further towing information.
- <sup>7</sup> See separate chassis warranty.
- <sup>8</sup> See your dealer for complete warranty information.

NA Not Available

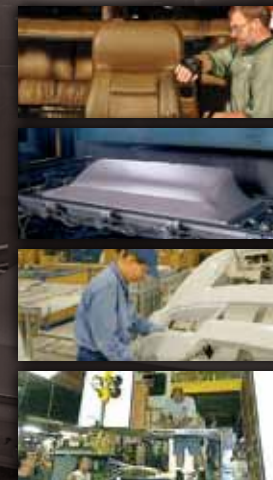
Not all items available in combination. See dealer for details.

Winnebago Industries® continuing program of product improvement makes specifications, equipment, model availability, and prices subject to change without notice. Comparisons to other motor homes are based on the most recent information available at printing.

## Weights & Measures

	34Y	36M	40U	42E
Length	35'	36'8"	40'8"	42'11"
Exterior Height <sup>1</sup>	12'8"	12'9"	12'10"	12'11"
Exterior Width <sup>2</sup>	8'5.5"	8'5.5"	8'5.5"	8'5.5"
Exterior Storage <sup>3</sup> (cu. ft.)	126.7	181.3	218.0	197.0
Awning Length	16'	20'	14'6"	20'
Interior Height	7'	7'	7'	7'
Interior Width	8'0.5"	8'0.5"	8'0.5"	8'0.5"
Freshwater Capacity w/Heater <sup>4</sup> (gal.)	96	102	102	102
Holding Tank Capacity - Black/Gray <sup>4</sup> (gal.)	53/80	46/60	63/61	71/51
LP Capacity <sup>5</sup> (gal.)	28	28	28	28
Fuel Capacity (gal.)	90	100	100	100
GCWR <sup>6</sup> (lbs.)	33,000	42,350	44,320	59,320
GVWR (lbs.)	27,910	32,350	34,320	44,320
GAWR - Front (lbs.)	10,410	12,350	14,320	14,320
GAWR - Rear (lbs.)	17,500	20,000	20,000	30,000
Wheelbase	208"	228"	276"	279"

## Take a Tour



We're proud of our processes, state-of-the-art facilities and the people who make Winnebago Industries number one. We invite you to visit our complex in Forest City, Iowa, for a first-hand look at the dedication and technology behind every motor home we build.

# NO SHORTCUTS — NO COMPROMISES

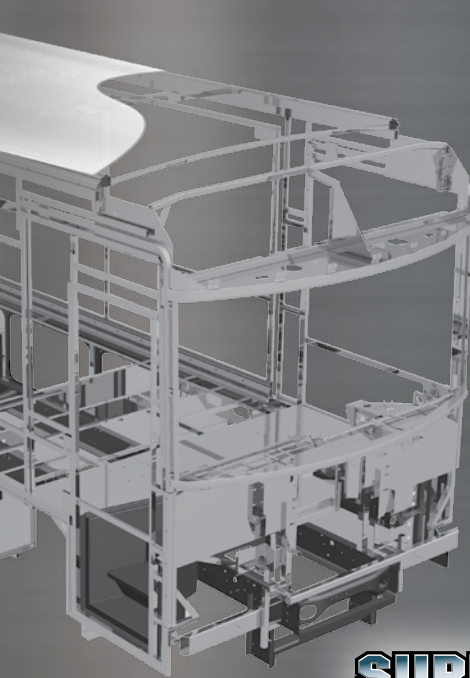
The crowned, one-piece **fiberglass roof** is backed by a 10-year limited parts-and-labor roof skin warranty. Fiberglass offers superior strength and durability over less attractive rubber roofs found on so many competitive models that can streak and degrade over time.

Durable, lightweight **Thermo-Panel® sidewalls** combine fiberglass, high-density block-foam insulation and the inner wall surface with aluminum support structures.

**Metal substructures** secure cabinets and appliances to add safety and stability.

An **electrodeposition coating** helps protect critical steel components.

Specially engineered **interlocking joints** connect the floor, sidewalls and roof into a cohesive unit.



**SUPER  
STRUCTURE**



You can compare features. You can compare styles. But when it comes to quality construction, there is **no comparison**. Only motor homes manufactured by Winnebago Industries harness the legendary strength and durability of our SuperStructure® construction process—a process we've been perfecting for more than 50 years.

SuperStructure means a solid framework, steel and aluminum substructures and components built in-house to our exacting standards. It means managing each detail to ensure the integrity and quality of every coach. It means barcoding parts to save time and frustration during service and running every coach through a high-pressure leak test before it leaves the factory.

Where other manufacturers cut corners, SuperStructure ensures the features you can't see are treated with the same care as the ones you can. When you buy a Winnebago motor home, you are getting a coach that is built for you—and built to last.

# Exteriors

# Décor

Choose from six striking full-body paint options.



**Silver Frost**  
FULL-BODY PAINT



**Cinnamon**  
FULL-BODY PAINT



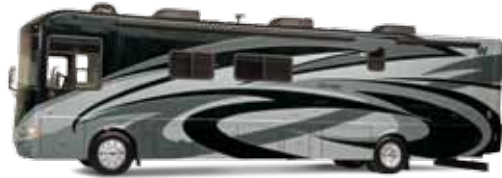
**Shadow Gray**  
FULL-BODY PAINT



**Desert Sand**  
FULL-BODY PAINT



**Silver Sage**  
FULL-BODY PAINT



**Platinum**  
FULL-BODY PAINT

Choose from three fabric collections and three cabinet wood choices, all with hidden hinges.

**Travertine** *Circles of whimsy highlight this warm palette in tones of gold and cream.*



Main

Marsh  
Ultraleather

Accent

Bedsread

Carpet

Sashay  
Wall Board

Cocoa Brown  
Corian  
Countertop

**Provence** *Timeless elegance with hints of soft color is at the heart of this fabric collection.*



Main

Surfside  
Ultraleather

Accent

Bedsread

Carpet

Sashay  
Wall Board

Matterhorn  
Corian  
Countertop

**Hawthorne** *Rich gray balances nature-themed accents in taupe and caramel colors.*



Main

Putty  
Ultraleather

Accent

Bedsread

Carpet

Driftwood  
Wall Board

Cottage Lane  
Corian  
Countertop



Honey Cherry



Forest Cherry



Coffee-Glazed Vienna Maple

*Fabrics and carpets may change without notice or obligation.*



## Don't Miss Out

Caravans, rallies, local and state events, and exclusive RV travel benefits can all be yours as a WIT Club member—and you can meet like-minded folks that possess the same enthusiasm for traveling this great nation of ours. It's a wonderful way to make your Journey a way of life. Learn more about the Winnebago-Itasca Travelers Club at [WITclub.com](http://WITclub.com).



### Members enjoy:

- Caravans and Rallies
- Local and State Group Activities
- RV Travel Benefits



## Committed to Service

We back our motor homes with best-in-class support both before *and* after the sale:

- 12-month/15,000-mile basic limited warranty
- 36-month/36,000-mile warranty on structure
- 10-year standard limited parts-and-labor roof skin warranty
- Complimentary 24-hour roadside assistance program
  - RV Technical Assistance Hotline
  - RV Service Appointment Assistance
  - Emergency Trip Interruption
  - Emergency Message Service
  - Nationwide Trip Routing
  - Fee-Free Travelers Cheques



- TripSaver Fast Track Parts guarantees that in-stock warranty parts ship directly to your dealer within 24 hours
- National dealer service network



Four simple questions to ask *before* you buy.

visit [BetterBuiltRVs.com](http://BetterBuiltRVs.com)



THE MOST RECOGNIZED NAME IN MOTOR HOMES™

NYSE: WGO

[GoWinnebago.com](http://GoWinnebago.com)



For Sales and Service Information Contact:

# LAMESA RV

EXPERIENCE LIFE

[www.lamesarv.com](http://www.lamesarv.com)  
800-496-8778